

# ROMAN BLINDS INSTALLATION GUIDE

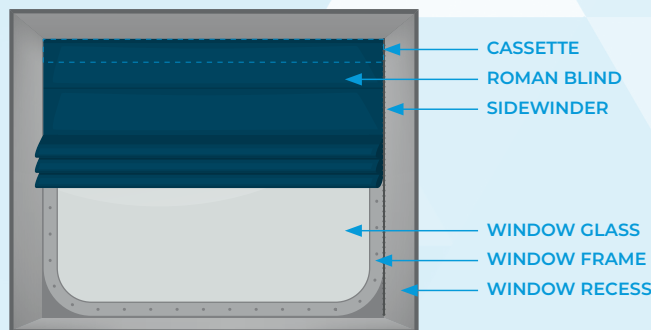
Solarglide Roman blinds pre manufactured to the exact size of your window, making them easy to install and set up when they arrive onboard

They come with an upper cassette, sidewinder mechanism, brackets and fixtures, child safety catches and folded fabric (they should be ready to hang)

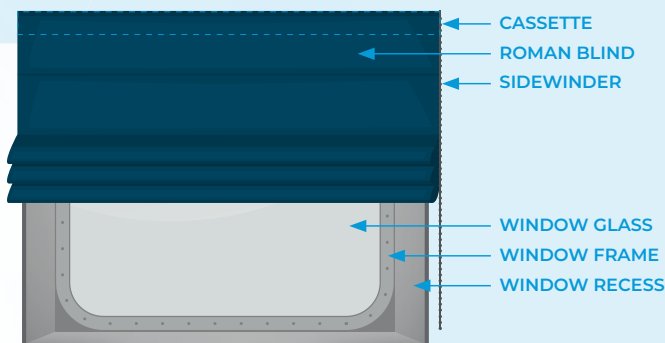
The Roman blind will arrive as a complete unit with the fabric velcro'ed to the upper cassette

Installation can either be within the window recess / or on the outside of the window recess

## INSIDE RECESS NORMALLY TOP FIX



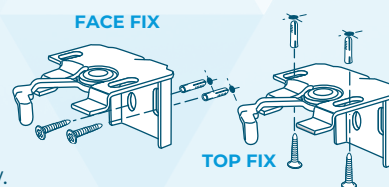
## OUTSIDE RECESS NORMALLY FACE FIX



When installing into the recess, make sure the blind isn't installed too close to the window and be aware of any obstructions such as window handles that need to be avoided.

When installing outside the recess make sure the overlap of the window is equal on each side, otherwise it will look unbalanced

Our swing type brackets are universal, meaning they can be either face fixed or top fixed into the window.

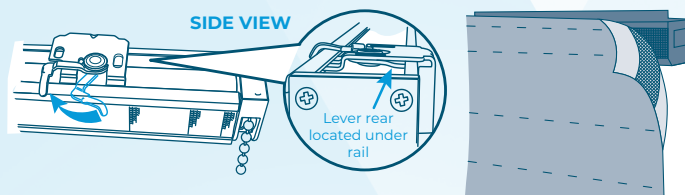


Install the brackets into position, rawl plugs may be needed depending upon the surrounds. We recommend two screws per bracket for adequate support. Depending on the width of the blind, will determine the number of brackets. Smaller blinds may only need 2 brackets, larger blinds may need 3,4 or 5 brackets depending upon the weight. Make sure that brackets are level with each other and equally spaced to support the blind cassette and the fabric

Once the brackets are installed into position, peel back the Velcro of the blind to reveal the exposed cassette, and make sure the brackets are in the open position.



Hook the bracket into the cassette and secure by closing the bracket lever. Once the cassette is secure, cover the exposed cassette with the velcro'ed fabric.



### TOOLS REQUIRED

- Electric or battery operated drill
- Manual or electric screw driver
- Pencil
- Hammer (may be needed if rawl plugs are used)



### FITTINGS AND FIXTURES INCLUDED:

- Brackets
- Screws
- Rawl plugs
- Cable guide fittings (if cable guides are included)
- Safety catches

Solarglide roman blinds come with levelling toggles located on the underside of the blind and can be accessed by carefully folding the blind upwards from the bottom to expose the backing lining. If the blind is not level, use these toggles to adjust until you are happy that it looks level on the window.

For child safety, there are safety catches included (either side fix or face fix). To make the blind child safe, make sure they are installed during set up. The safety catch will be colour matched to the sidewinder colour.



Operation of the blind is simple. Pull the sidewinder one way to lower the blind and the other to raise it up the window. When raising the blind be careful not to overdo it as going too high could damage the blind. When the blind is fully closed, it will be a flat piece of fabric that covers the full window.