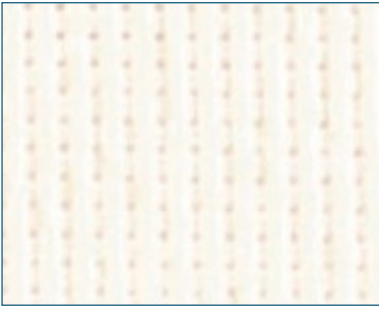




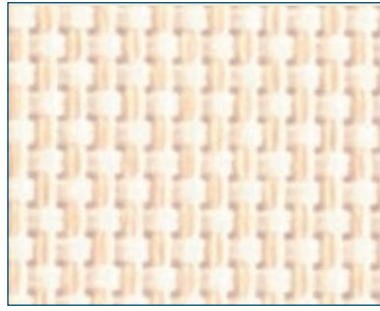
## ROE DIMOUT BLIND RANGE

Dimout Fabric • 7 Colours • Flame Retardant

**IMO FR  
FABRICS**



**WHITE**



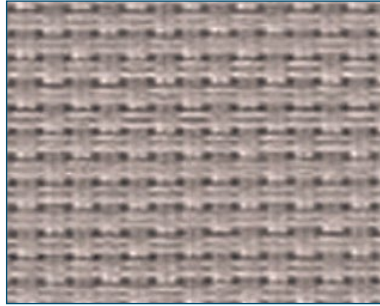
**BEIGE**



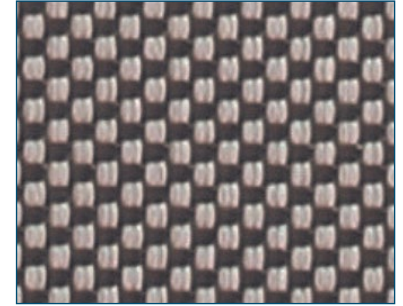
**BRONZE**



**LIGHT GREY**



**MILD GREY**



**DARK GREY**



**CHARCOAL**

# ROE DIMOUT

## Fabric Composition

75% PVC, 25% Polyester

## Fabric Widths

1.83m (72"), 2.5m (98.4"), 3m (118.11")

## Fabric Weight

1%: 496gsm, 3%: 445gsm

## Properties



FR



Wipe Clean



100%

## Flammability Standards

Roe Dimout meets FR standard BS 5867 Part 2 Type B. Further information is available on request

## IMO Certified

IMO 2010 FTP CODE ANNEX 1 PART 7

## Cleaning

Roe Dimout fabrics can be wiped clean. Tested in accordance with BS EN 26330:1994 method 7a

## Colour Properties

	% Openness	% Heat Transmittance	% Heat Reflectance	% Heat Absorption	% Light Transmittance	% Sun/UV Protection	Shading Co-efficiency	GTOT
White	3	17	65	18	10	97	0.30	0.36
Beige	3	16	55	29	9	97	0.36	0.39
Light Grey	3	10	43	47	6	97	0.44	0.42
Mid Grey	3	7	31	62	4	98	0.45	0.54
Dark Grey	3	3	13	82	2	99	0.66	0.58
Bronze	3	2	5	93	3	98	0.64	0.54
Charcoal	3	2	4	94	3	98	0.58	0.66

The following is for the white backed roe colours:

Beige	3	16	53	31	10	98	0.37	0.39
Light Grey	3	14	42	44	9	97	0.42	0.41
Mid Grey	3	9	23	68	6	97	0.51	0.44
Dark Grey	3	3	10	87	3	98	0.56	0.46



+44 191 5970543



theteam@solarglide.com



www.solarglide.com