

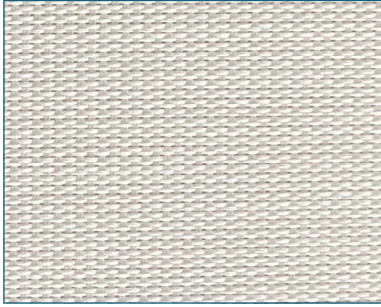


SOLARGLIDE MED DIMOUT BLIND RANGE

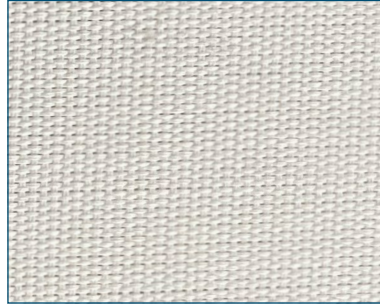
MED Dimout Fabric • 22 Colours • FR

MED
FABRICS

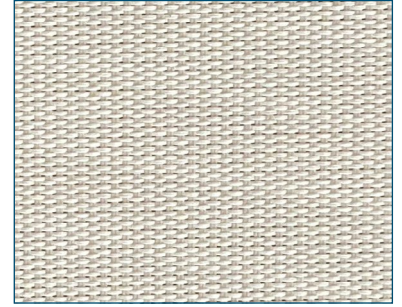
MED DIMOUT COLOUR RANGE



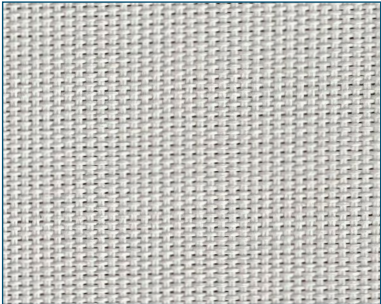
0221 White Lotus



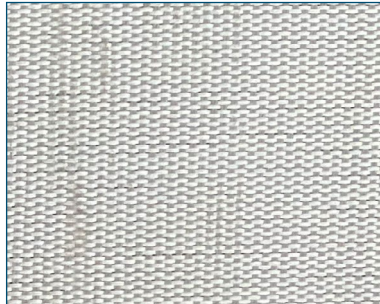
0202 White



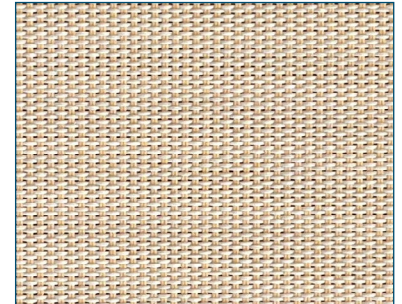
0220 White Linen



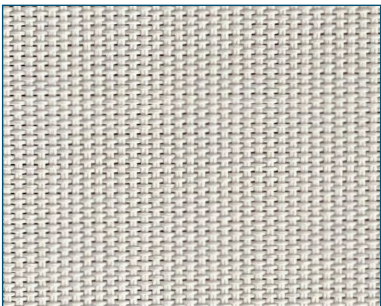
0721 Pearl Lotus



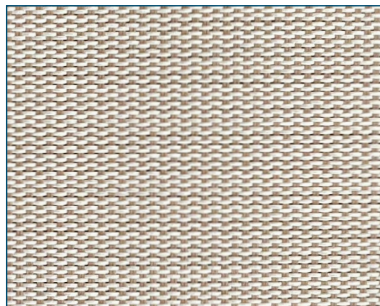
0207 White Pearl



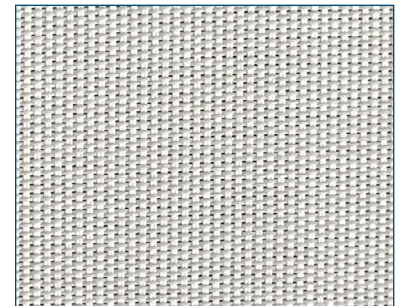
0771 Pearl Apricot



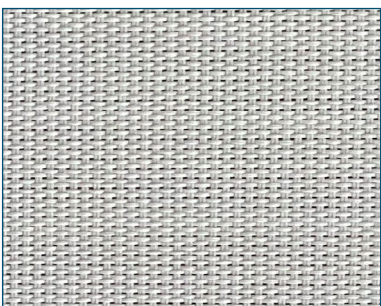
0720 Pearl Linen



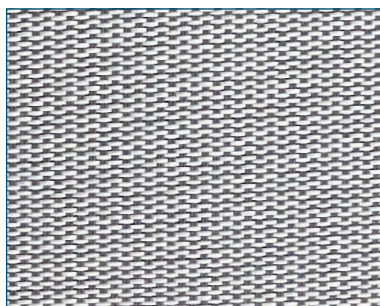
0210 White Sable



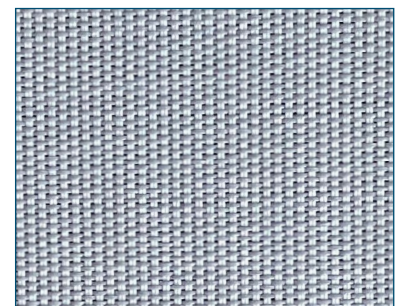
0702 Pearl White



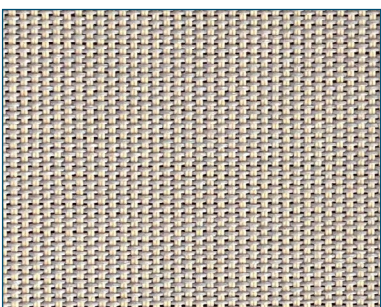
0707 Pearl



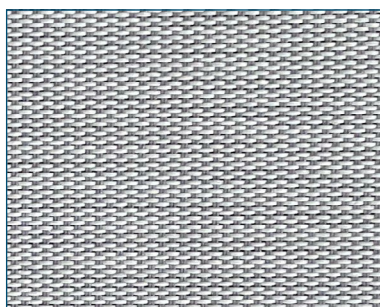
0201 White Grey



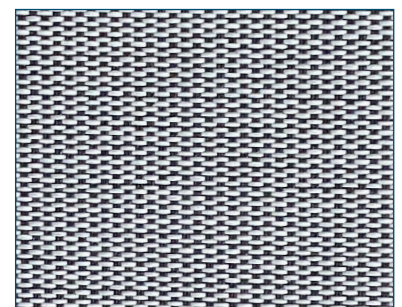
0121 Grey Lotus



0171 Grey Apricot

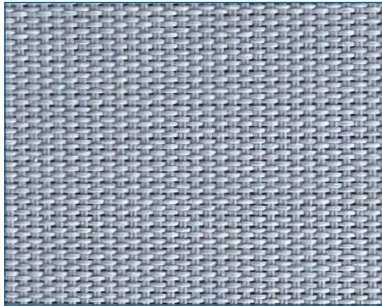


0701 Pearl Grey

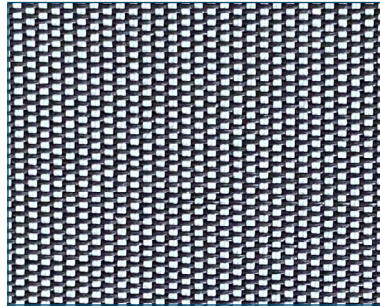


0730 Pearl Charcoal

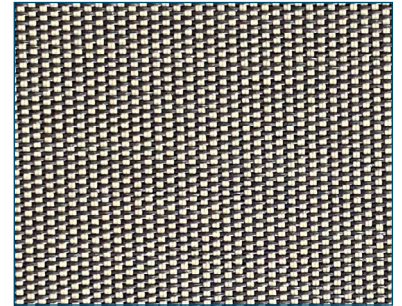
MED DIMOUT COLOUR RANGE



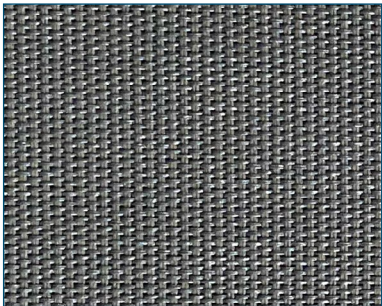
0101 Grey



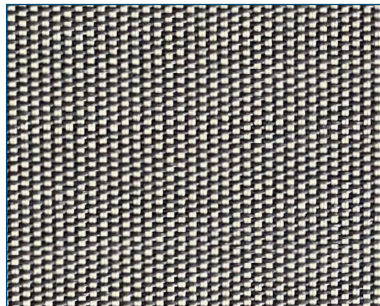
3002 Charcoal White



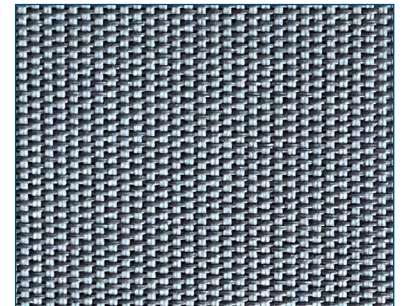
3071 Charcoal Apricot



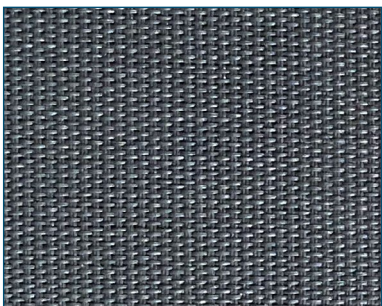
3006 Charcoal Bronze



3010 Charcoal Sable



3001 Charcoal Grey



3030 Charcoal



+44 191 5970543



theteam@solarglide.com



www.solarglide.com

Technical Data

	Screen 8501	Screen 8503	Screen 8505
Composition	36% Fibreglass - 64% PVC		
Fire, smoke classification	M1 (F) - NFP 92 503 B1 (DE) - DIN 4102-1 / BS (GB) - 476 Pt 6 & 7 Class 0 Euroclass C-s3-d0 (EU) - EN 13501-1 mounted according to EN 13823 & EN 14716 IMO - MED 2014/90/EU	CLASS 1 (SP) - EN 13773 FR (US) - NFPA 701 HHV: 15,7 MJ/kg (8501: 6,91 MJ/m ² - 8503: 6,51 MJ/m ² - 8505: 6,12 MJ/m ²)	
Openness factor	1%	3%	5%
UV Screen	Up to 100%	Up to 98%	Up to 96%
Weight/m ² - ISO 2286-2	440 g ± 5%	415 g ± 5%	390 g ± 5%
Thickness - ISO 2286 - 3	0,50 mm ± 5%	0,48 mm ± 5%	0,50 mm ± 5%
Colour Fastness to light (scale of 8)	7/8 - ISO 105 B02 (white not graded)		

Specifications

- **3 Openness Factors - 1%, 3% and 5% to optimize solar protection**
- **Excellent Glare Control (M-Screen 8501): Up to 100% of light rays filtered (Tv = 0%), comfort classification 3 (good effect) according to EN 14501 standard**
- **Internal thermal comfort: up to 87% of solar energy rejected (gtot = 0,13/glazing g = 0,32 and U = 1,1)**
- **Optimal Transparency and incoming of natural light to improve energy efficiency of vessels**
- **22 Colours**

Thermal and Optical Factors

Table On Next Page

gv = 0,59: Solar factor of standard glazing (C), low-emission 4/16/4 double glazing filled with Argon (U value thermal transmittance = 1,2W/m²K).

gv = 0,32: Solar factor of standard glazing (D), reflecting low-emission 4/16/4 double glazing filled with Argon (U value thermal transmittance = 1,1W/m²K).

Comfort classification according to EN 14501 standard: 0 very little effect 1 little effect 2 moderate effect 3 good effect 3 very good.

Samples tested according to EN 14500 standard defining the measurements and calculation methods as specified in the standard EN 13363-2 "Solar protection devices combined with glazing calculation of solar and light transmittance- part 2: EN 13363-2 detailed method" and EN 410 "Glass in building. Determination of luminous and solar characteristics of glazing".



+44 191 5970543



theteam@solarglide.com



www.solarglide.com

Thermal and Optical Factors

8501 - Of 1% 8503 - Of 3% 8505 - Of 5%	Thermal Factors															Optical Factors		
	Fabric									Fabric & glazing / gtot internal blind						Tv		
	T _s			R _s			A _s			C: gv = 0,59			D: gv = 0,32					
COLOURS	8501	8503	8505	8501	8503	8505	8501	8503	8505	8501	8503	8505	8501	8503	8505	8501	8503	8505
0221 White Lotus	18	22	24	66	61	60	16	17	16	0,30 e	0,33 e	0,34 e	0,14 e	0,16 e	0,17 e	17	20	23
0202 White	18	20	21	70	69	67	12	11	12	0,28 e	0,29 e	0,31 e	0,13 e	0,13 e	0,14 e	17	19	21
0220 White Linen	16	20	22	65	60	60	19	20	18	0,30 e	0,34 e	0,33 e	0,14 e	0,17 e	0,18 e	14	17	20
0721 Pearl Lotus	12	17	19	42	41	39	46	42	42	0,41 i	0,41 i	0,42 i	0,22 e	0,22 e	0,23 e	10	15	17
0207 White Pearl	12	14	18	58	53	52	30	33	30	0,33 e	0,36 i	0,37 i	0,16 e	0,18 e	0,18 e	10	13	16
0771 Pearl Apricot	13	20	19	40	40	38	47	40	43	0,42 i	0,42 i	0,43 i	0,22 e	0,23 e	0,24 e	11	16	16
0720 Pearl Linen	11	15	17	43	42	41	46	43	42	0,41 i	0,41 i	0,42 i	0,22 e	0,22 e	0,23 e	9	13	15
0210 White Sable	11	14	17	57	52	52	32	34	31	0,34 e	0,37 i	0,37 i	0,17 e	0,20 e	0,20 e	8	11	14
0702 Pearl White	12	14	16	46	49	47	42	37	37	0,39 i	0,38 i	0,38 i	0,20 e	0,19 e	0,20 e	9	12	14
0707 Pearl	9	12	16	38	36	34	53	52	50	0,42 i	0,43 i	0,44 i	0,22 e	0,23 e	0,23 e	7	11	14
0201 White Grey	8	11	15	50	43	44	42	46	41	0,37 i	0,41 i	0,41 i	0,19 e	0,22 e	0,21 e	6	8	12
0121 Grey Lotus	6	12	14	27	28	28	67	60	58	0,47 i	0,47 i	0,48 i	0,26 e	0,26 e	0,27 e	3	8	11
0171 Grey Apricot	7	12	15	25	28	26	68	60	59	0,48 i	0,48 i	0,48 i	0,27 e	0,27 e	0,27 e	3	8	11
0701 Pearl Grey	7	9	12	32	29	29	61	62	59	0,44 i	0,47 i	0,48 i	0,25 e	0,25 e	0,25 e	4	7	10
0730 Pearl Charcoal	4	6	9	24	22	22	72	72	69	0,46 i	0,49 i	0,49 i	0,25 e	0,27 e	0,27 e	4	5	8
0101 Grey	4	7	11	20	20	20	76	73	69	0,52 o	0,52 o	0,51 o	0,29 e	0,28 e	0,29 e	2	4	8
3002 Charcoal White	1	4	7	17	22	20	82	74	73	0,51 o	0,49 i	0,50 o	0,28 e	0,26 e	0,27 e	1	4	6
3071 Charcoal Apricot	1	4	7	10	14	12	89	82	81	0,54 o	0,52 o	0,53 o	0,30 e	0,29 e	0,29 e	1	4	6
3006 Charcoal Bronze	0	3	5	6	6	6	94	91	89	0,55 o	0,56 o	0,55 o	0,30 e	0,31 e	0,31 e	0	3	6
3010 Charcoal Sable	1	5	6	11	12	12	88	83	82	0,54 o	0,53 o	0,53 o	0,30 e	0,29 e	0,29 e	1	5	5
3001 Charcoal Grey	1	4	6	8	9	9	91	87	85	0,55 o	0,54 o	0,55 o	0,30 e	0,30 e	0,31 e	1	4	5
3030 Charcoal	1	3	4	5	6	5	94	91	91	0,55 o	0,56 o	0,56 o	0,31 e	0,31 e	0,31 e	0	3	4