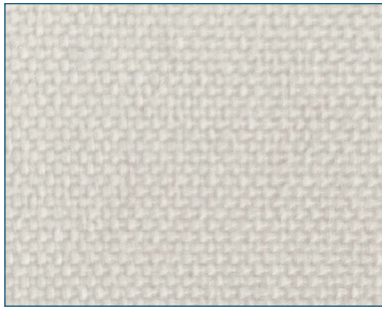




## **MICRO BLIND BLACKOUT RANGE**

Blackout Fabric • 10 Colours • FR

# MICRO BLIND - BLACKOUT COLOUR RANGE



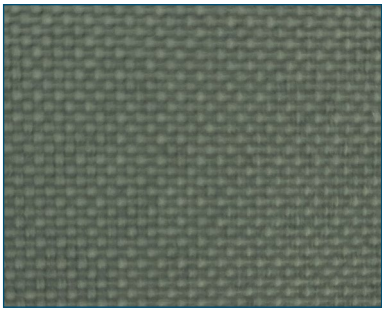
**Lily**



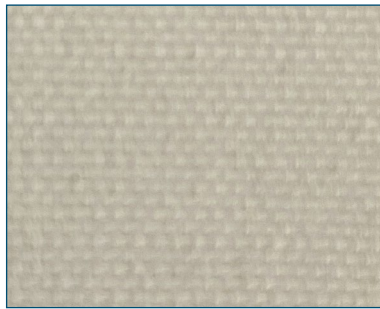
**Cloud**



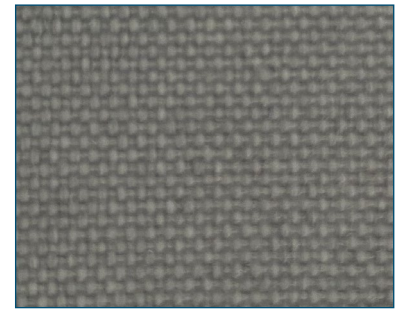
**French Blue**



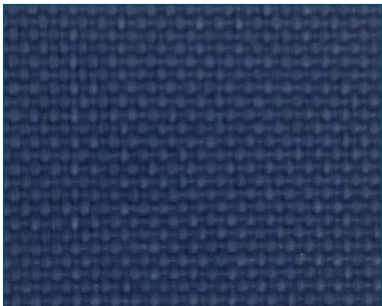
**Forest**



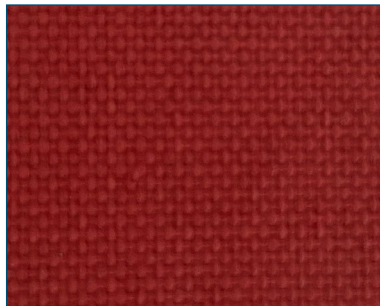
**Meringue**



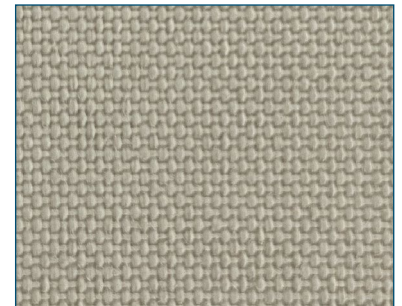
**Dolphin**



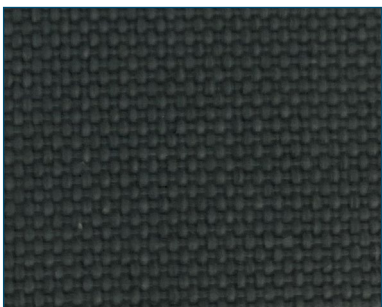
**Maritime**



**Cherry**



**Hessian**



**Slate**

## Technical Data

BLACKOUT FABRIC	
Composition	100 % Polyester
Width	2.10m (82.7")
Weight	490g/m <sup>2</sup> (14.45oz/yd <sup>2</sup> )
Flammability Standards	Meets FR standard BS 5867 Part 2 Type B. Further information is available on request.
Colour Fastness	Tested in accordance with BS EN ISO 105-B01:1999
Cleaning	Can be wiped clean. Tested in accordance with BS EN 26330:1994 method 7a



FR



Wipe Clean



100%

## Solar, Optical & Colour Fastness Properties

	Solar			Optical			UV Block	SC	CF	Dim Out
	T <sub>S</sub>	R <sub>S</sub>	A <sub>S</sub>	T <sub>O</sub>	R <sub>O</sub>	A <sub>O</sub>				
Cherry	0	81	19	0	91	9	100	0.22	6+	5
Cloud	0	81	19	0	91	9	100	0.22	6	5
Dolphin	0	81	19	0	91	9	100	0.22	6	5
Forest	0	81	19	0	91	9	100	0.22	6	5
French Blue	0	81	19	0	91	9	100	0.22	6+	5
Hessian	0	81	19	0	91	9	100	0.22	6	5
Lily	0	81	19	0	91	9	100	0.22	6+	5
Maritime	0	81	19	0	91	9	100	0.22	6	5
Meringue	0	81	19	0	91	9	100	0.22	6+	5
Slate	0	81	19	0	91	9	100	0.22	5	5

T: % Transmittance  
R: % Reflectance  
A: % Absorption

UV Block: the % of UV light blocked by the fabric  
SC: Shading Co-efficient  
CF: Colour Fastness

Dim Out:  
1 - High light Penetration  
4 - Low Light Penetration  
5 - Blackout



+44 191 5970543



theteam@solarglide.com



www.solarglide.com